



LixelKity K1
Compact Yet Powerful

LixelKity K1

Lixel K1 is XGRIDS' compact handheld scanner. Integrating 48MP x 2 panoramic cameras and 360 ° LiDARs within its body, it generates cm-level colored models for professionals and 3D hobbyists, offering convenient scanning and reconstruction experience.



1kg



color point cloud
in real-time



360°
scanning

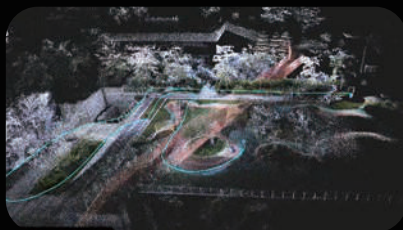


convenient
operation



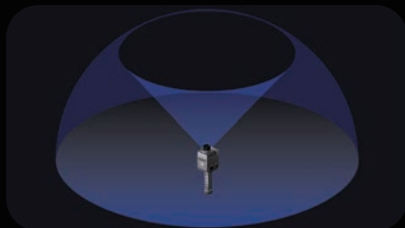
Compact and Lightweight

With a 1kg (with battery) aluminum alloy body, K1 highly Integrated vision modules and LiDAR.



Real-Time Color Point Cloud, Delicate Presentation

48 MP x 2 imaging provides exquisite real-time true-color point clouds.



Panoramic Capture, No Omissions

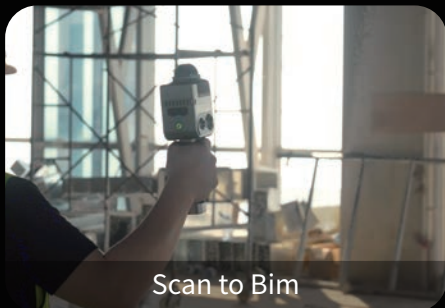
360° x 360° true panoramic vision, 360° laser horizontal scanning field.



Convenient Operation, Collect as You Wish

Its low learning cost makes professional 3D data collection and modeling extremely simple.

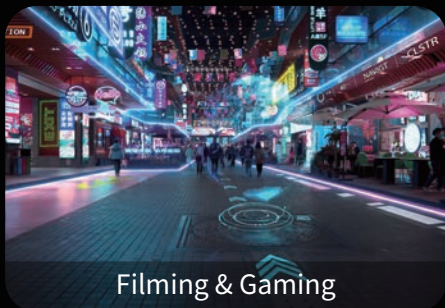
Application Scenarios



Scan to Bim



Digital Twins



Filming & Gaming



Culture & Tourism

Software

PC



LixelStudio

An all-in-one 3D post-processing software that offers a range of features, including point cloud viewing, editing, model generation, and post-processing.

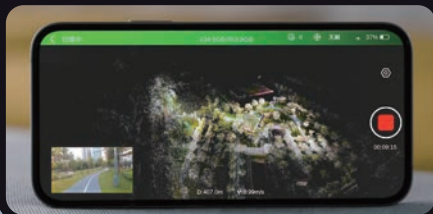


APP



LixelGO

Mobile-controlled operational workflow, real-time preview of scan results, and one-screen monitoring of device status.



Specification

Device Performance

| | |
|--------------------------|----------------------------------|
| Power Input | 14.4V |
| Power Consumption | <20W |
| Weight | 1kg |
| Data Interface | USB3.1 Gen2 |
| Storage Capacity | TF card 256G (Replaceable) |
| Connection Mode | Wifi/Bluetooth |
| Operating Temperature | -20°C~50°C |
| Protection Level | IP54 |
| Product Shell | Navigational Aluminum |
| Power Supply | Fast-lock Battery/External Power |
| Operating Time | 1.5h |
| Battery Capacity | 28.8wh |
| Number of Cameras | 4 |
| Visual-Aided Positioning | Supported |
| APP WiFi Distance | 20m |
| RTK Module | Supported |

Scan Performance

| | |
|---------------------------------|-----------------------|
| Laser Class | Class1 / 905nm |
| Relative Accuracy | 1.2cm |
| Absolute Accuracy | 3cm |
| Repeat Accuracy | 2cm |
| Horizontal Accuracy | 0.015° |
| Working Range | 0.1m~40m@10%, 70m@80% |
| LiDAR FOV | 360°* -7~-+52° |
| Scan Mode | Mobile |
| Scan Speed | 200,000 Points/s |
| | Supported |
| Resume Scanning from Breakpoint | |

Visual Module

| | |
|-------------------|------------------------------|
| Camera FOV | Color Panorama HDV 360°*360° |
| Camera resolution | 48MP x 2 |

Data & Storage

| | |
|----------------------|---|
| Calculating mode | Real-time calculating/ Mixed calculating |
| Calculating software | Lixel Studio post-processing software for Windows |
| Point Cloud Format | .Las |
| Color point cloud | Supported |

Contact Us

Sales and Partners: sales@xgrids.com

Brand and Business Consulting: enterprise@xgrids.com

Follow Us



LinkedIn



Youtube



Facebook



X

Company Address: 29th Floor, Colorful Information Innovation Center,
3176 Keyuan South Road, High-tech South District, Nanshan District, Shenzhen
Company Website: WWW.XGRIDS.COM

*Copyright belongs to Shenzhen XGRIDS Innovation Technology Co., Ltd. Reproduction is authorized only with permission.